



Arendt Seminar

Behind the scenes of arbitration clauses

Invitation

THURSDAY
13 Feb. 2020

11 am - Welcome
 11.30 am - Presentations
 1 pm - Walking lunch

[REGISTER HERE_](#)

Add to calendar_

WHERE?

Arendt house
 41A, Avenue JF Kennedy
 L-2082 Luxembourg
 LUXEMBOURG

Arendt is pleased to invite you to the third edition of our [Arendt Arbitration and Litigation Seminar](#) dedicated to some specificities and practical aspects of arbitration. The seminar will take place on Thursday 13 February at Arendt House.

Agenda

- **Welcome and introduction**
- **Arbitration : how does it work?** This section will detail with whom you can arbitrate, what the main phases of an arbitration are, explain how the arbitral process differs from litigation and mediation and provide you with tips as to the redaction of arbitration clauses
- **What are the advantages of resorting to arbitration from a business perspective?** This section will detail how using arbitration to resolve cross-border disputes can be a plus for your business (e.g., enforceability of awards, neutrality and confidentiality, etc.)
- **Latest developments for swifter resolution of disputes:** How to get a final decision within six months or an interim relief order within 15 days?
- **Conclusion**

[Access map_](#)

This seminar will be presented by **Marianne Rau** (Partner), **Séverine Brasseur** (Senior Associate), **Maria Grosbusch** (Associate), **Estelle Brisson** (Associate) and concluded by **Guy Harles** (Chairman).

We hope to see many of you and look forward to welcoming you to our [Arendt Arbitration and Litigation Seminar](#).

Should you have any questions, please contact the Events Team (events@arendt.com).

Arendt & Medernach
arendt.com

ARENDR SPEAKERS



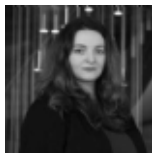
Guy Harles
Chairman
Corporate Law, Mergers & Acquisitions; Private Clients



Marianne Rau
Partner
Dispute Resolution; Administrative Law, Property & Construction; Private Clients



Séverine Brasseur
Senior Associate
Dispute Resolution; Administrative Law, Property & Construction



Maria Grosbusch
Associate
Private Equity & Real Estate



Estelle Brisson
Associate
Banking & Financial Services

ARENDR DISPUTE RESOLUTION CONTACTS



Clara Mara-Marhuenda
Partner
Dispute Resolution; Commercial & Insolvency
[More about the contact_](#)



Marianne Rau
Partner
Dispute Resolution; Administrative Law, Property & Construction; Private Clients
[More about the contact_](#)

