



ESG in the banking and insurance sector: stay ahead of the game

Webinar on 27 June 2022

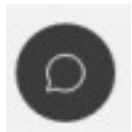
Hello and welcome!

Let's enjoy an interactive session



Q&A – please send your questions to the panelists

You can access the Q&A section by clicking on the 3 dots button in the toolbar at the bottom of your screen.



Chat – should you have technical issues, please write us in the chat

You can access the chat section by clicking on the icon in the toolbar at the bottom of your screen.

The speakers



Emmanuelle Mousel

Partner
Arendt & Medernach



Clara Bourgi

Senior Associate
Arendt & Medernach



Laura Archange

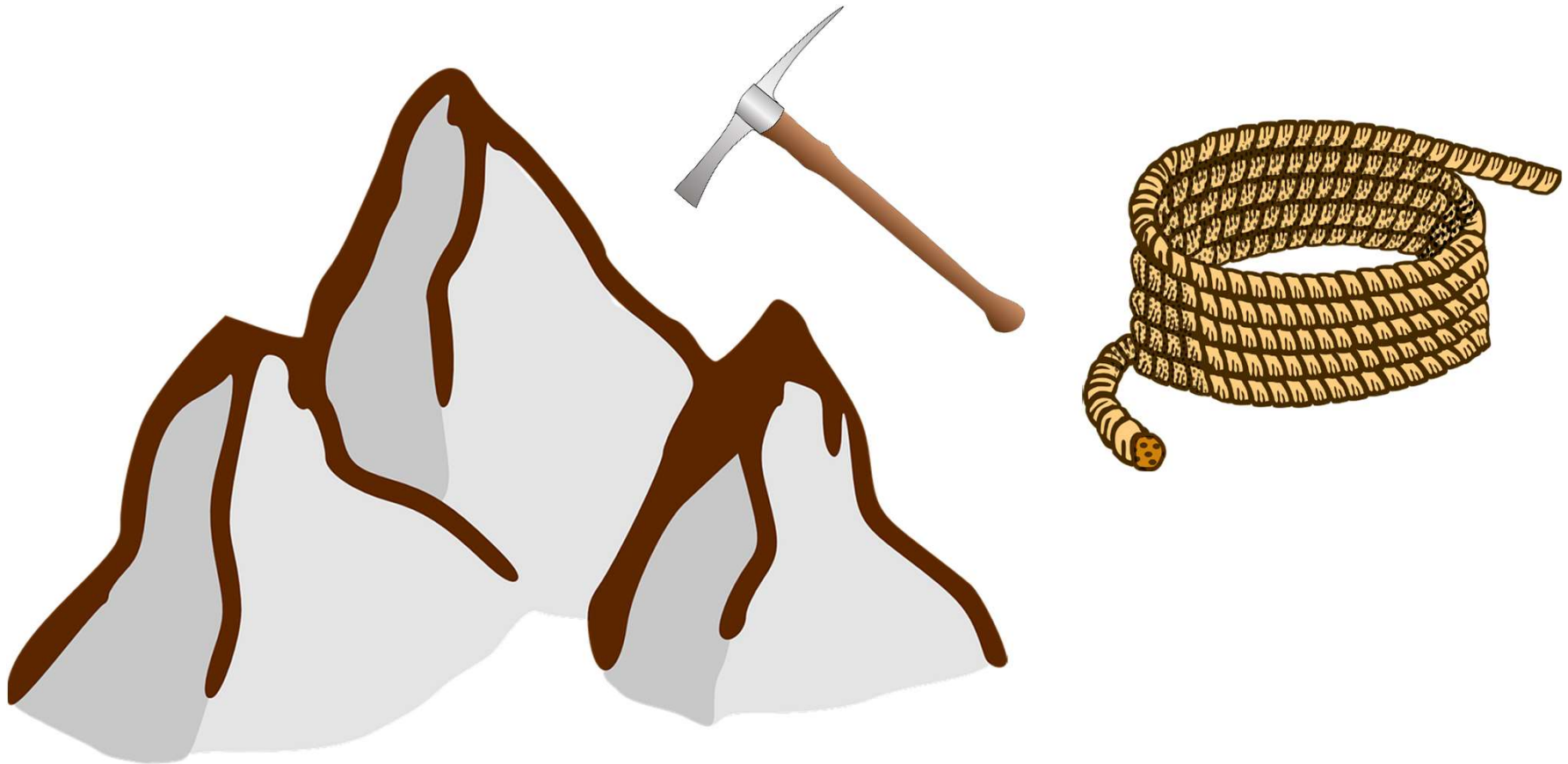
Counsel
Arendt & Medernach



Antoine Peter

Manager
Arendt Regulatory & Consulting

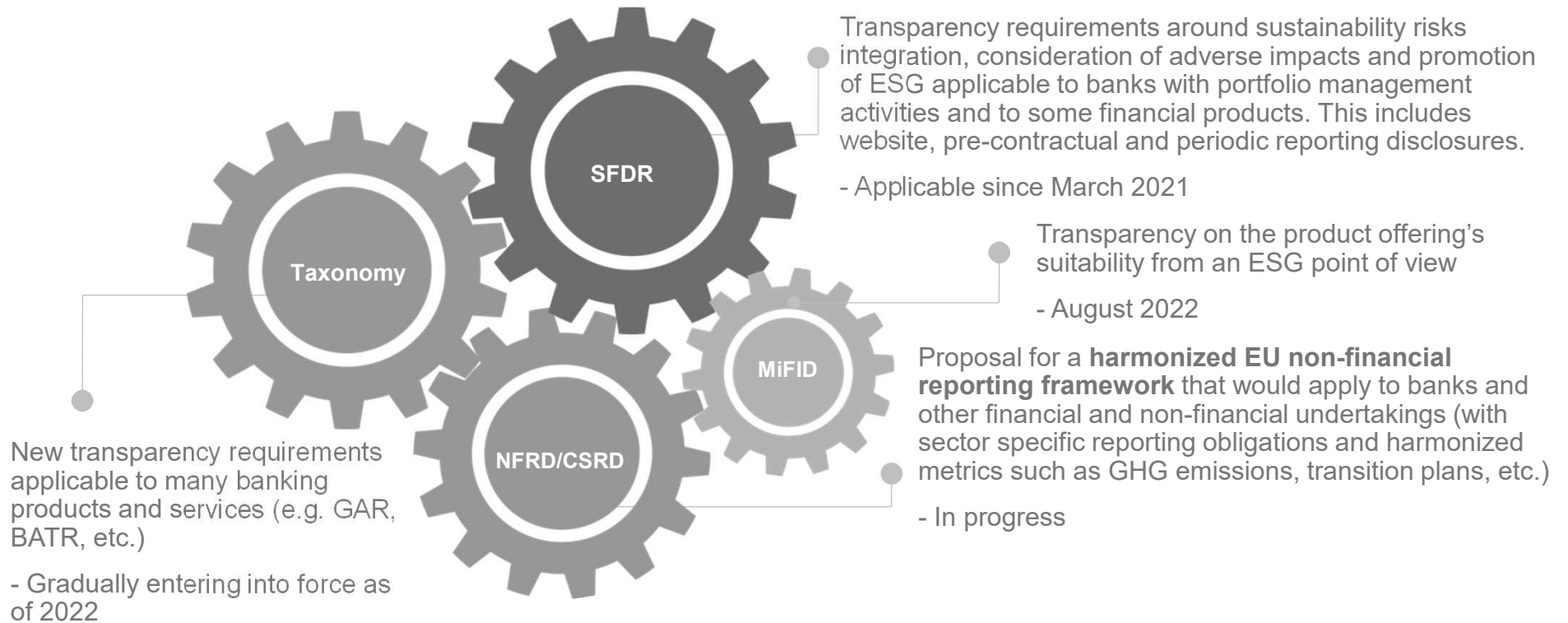
Introduction





Disclosures

Disclosures - Banks

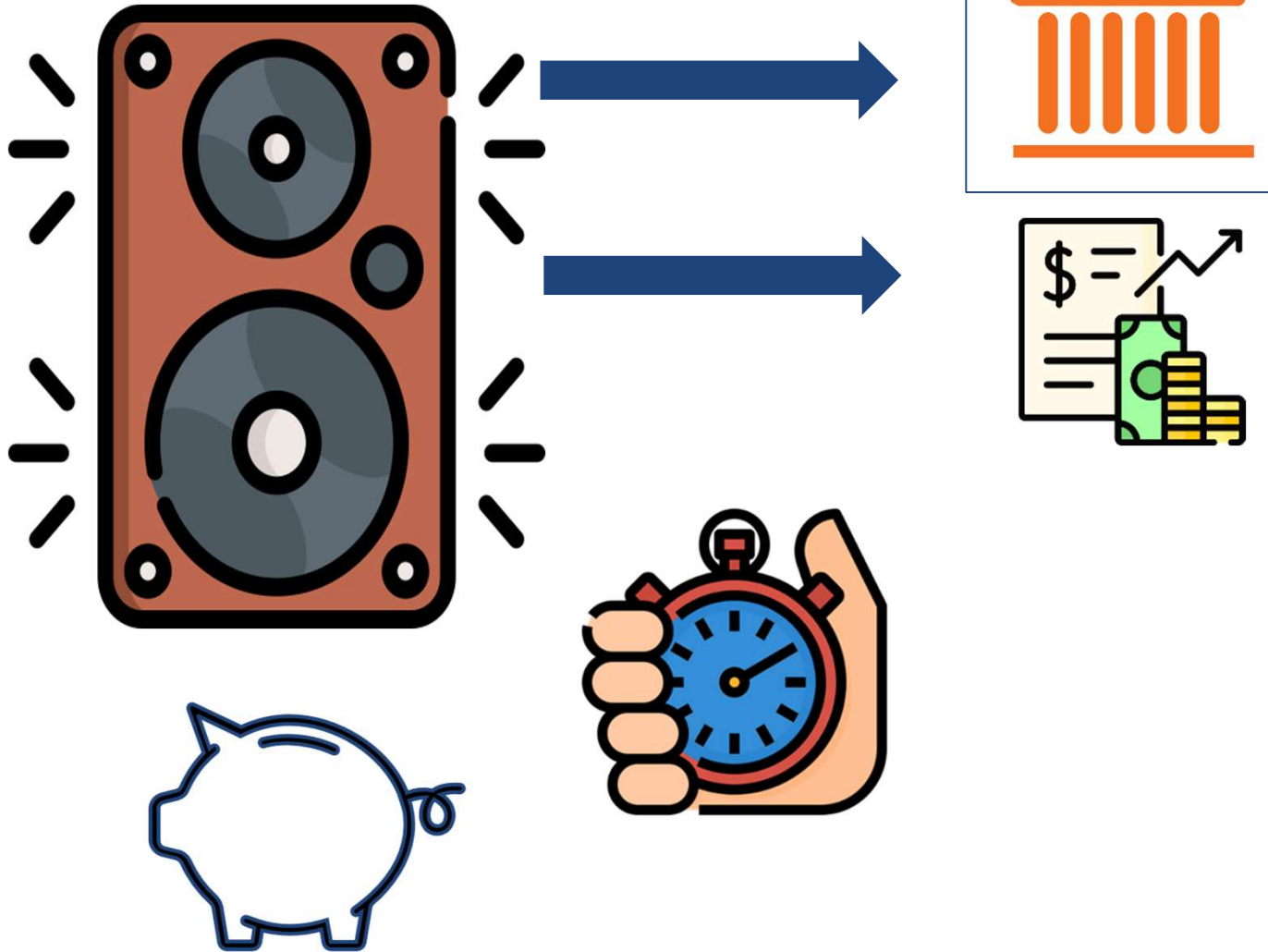


Strategic



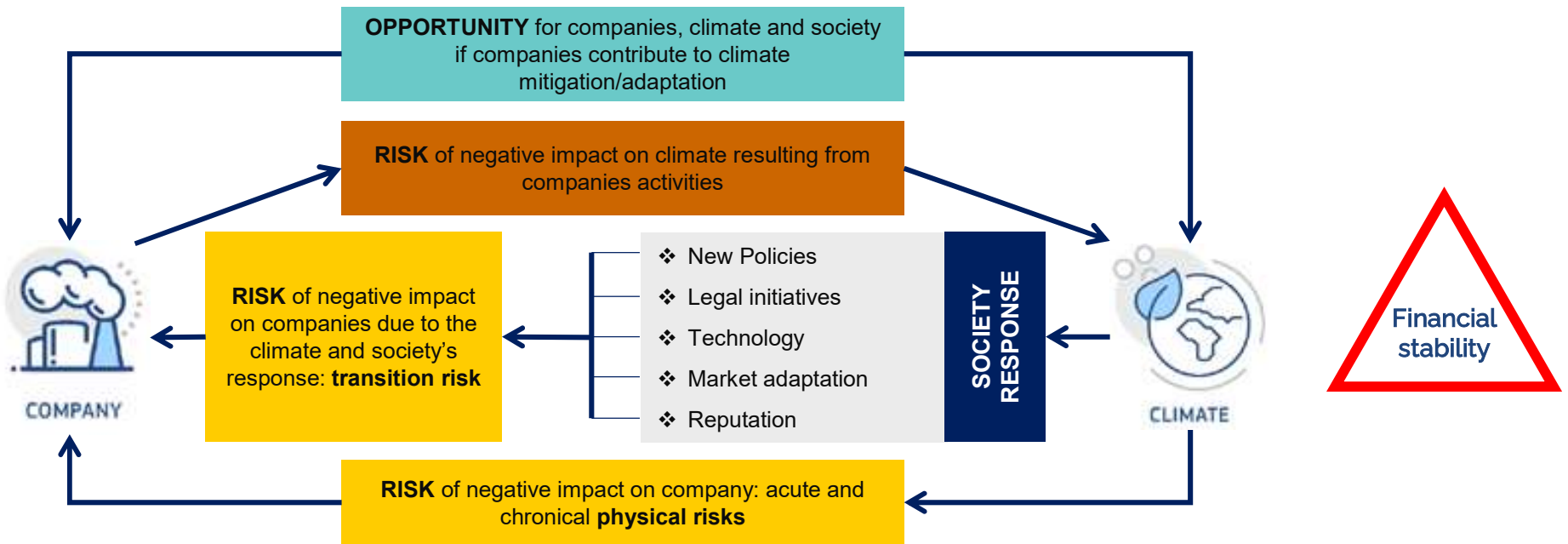
Greenwashing risk
mitigation

Disclosures - Insurance



Risk Management

Risk Management - Banks

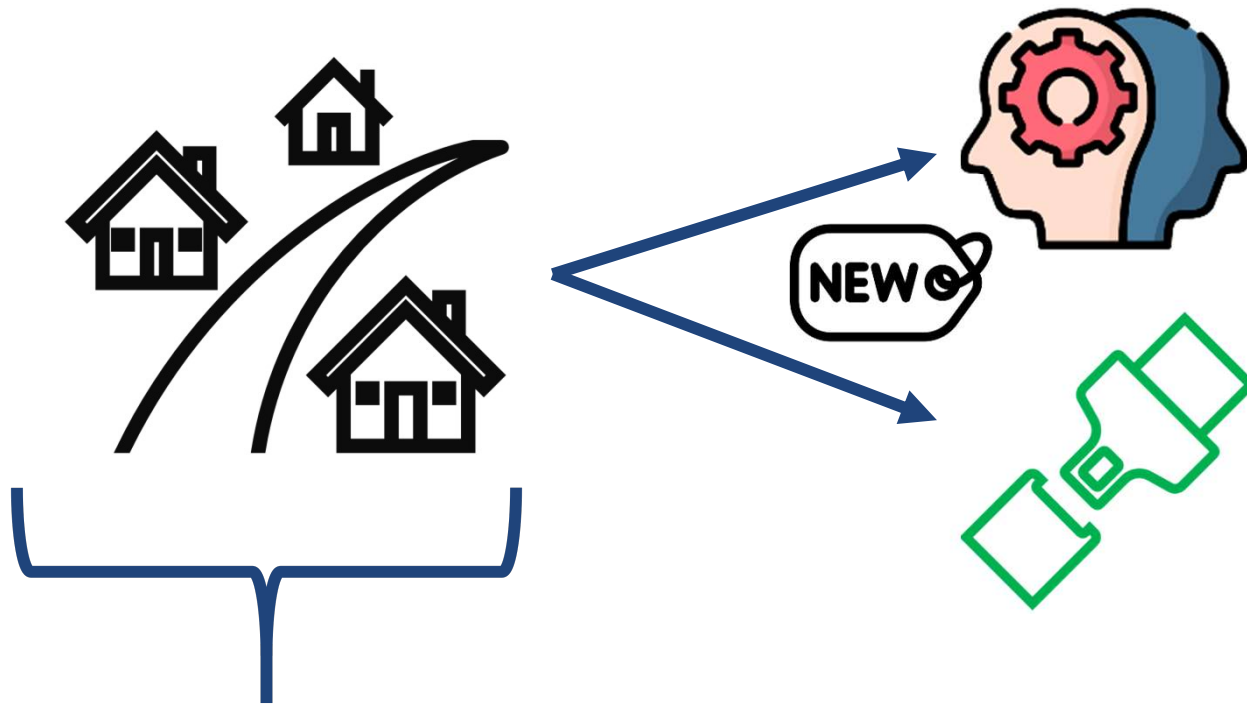


CSSF Circular 21/773 - On the Management of Climate-related and Environmental Risk

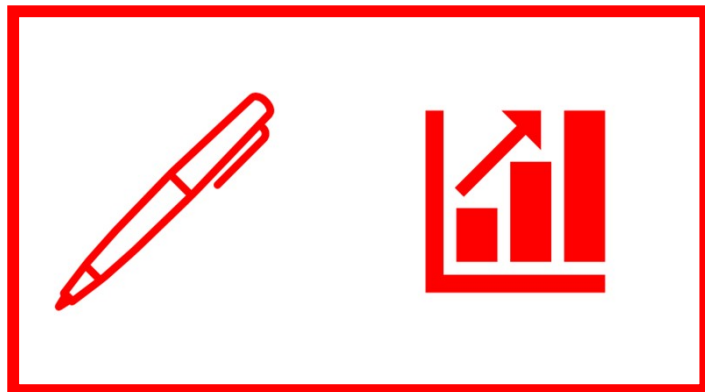
- o Identification of risk exposure
- o Business strategy and risk appetite
- o Risk management framework
- o Internal governance

Applicable

Risk Management - Insurance



**2nd August
2022**

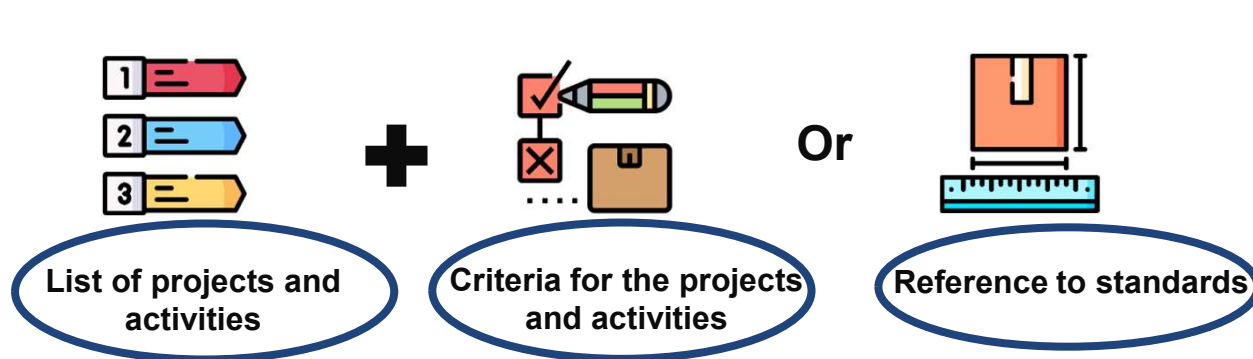




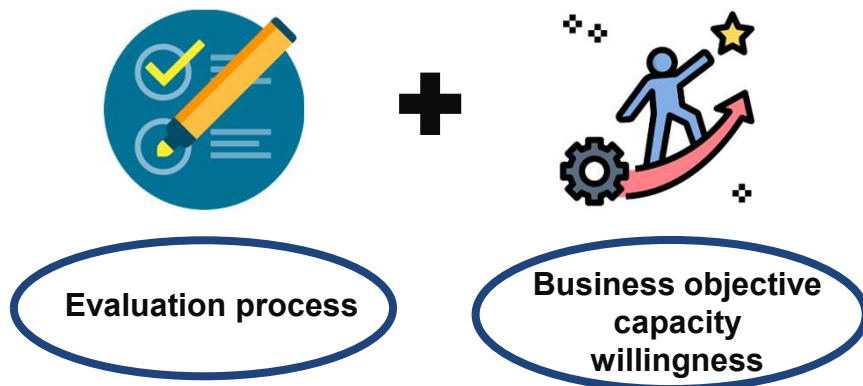
Bank Lending

Bank Lending - Loan origination and EBA Guidelines

Environmentally sustainable credit facilities:



- **30 June 2021:** new loans
- **30 June 2022:** re-negotiated loans



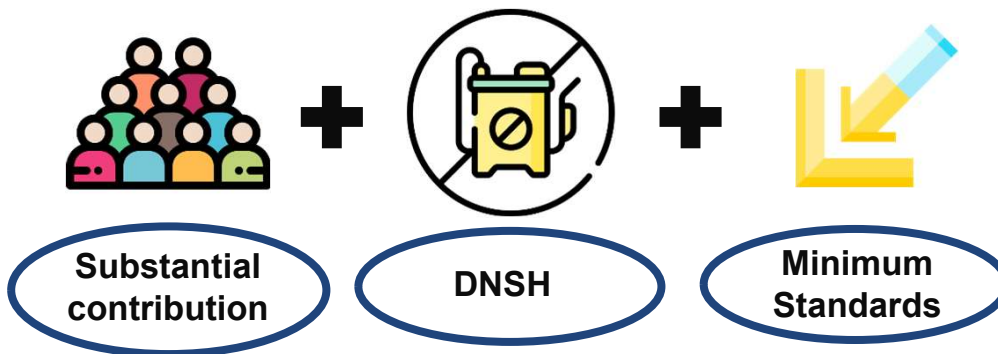
Bank Lending - Loan origination and EU taxonomy

1st phase (01/01/2022): Taxonomy-eligible activities



- Known vs. Unknown use of proceeds
- NFRD vs. Non-NFRD borrowers

2nd phase (01/01/2024): Taxonomy-aligned activities



Bank Lending - ESG Loans – current market practices



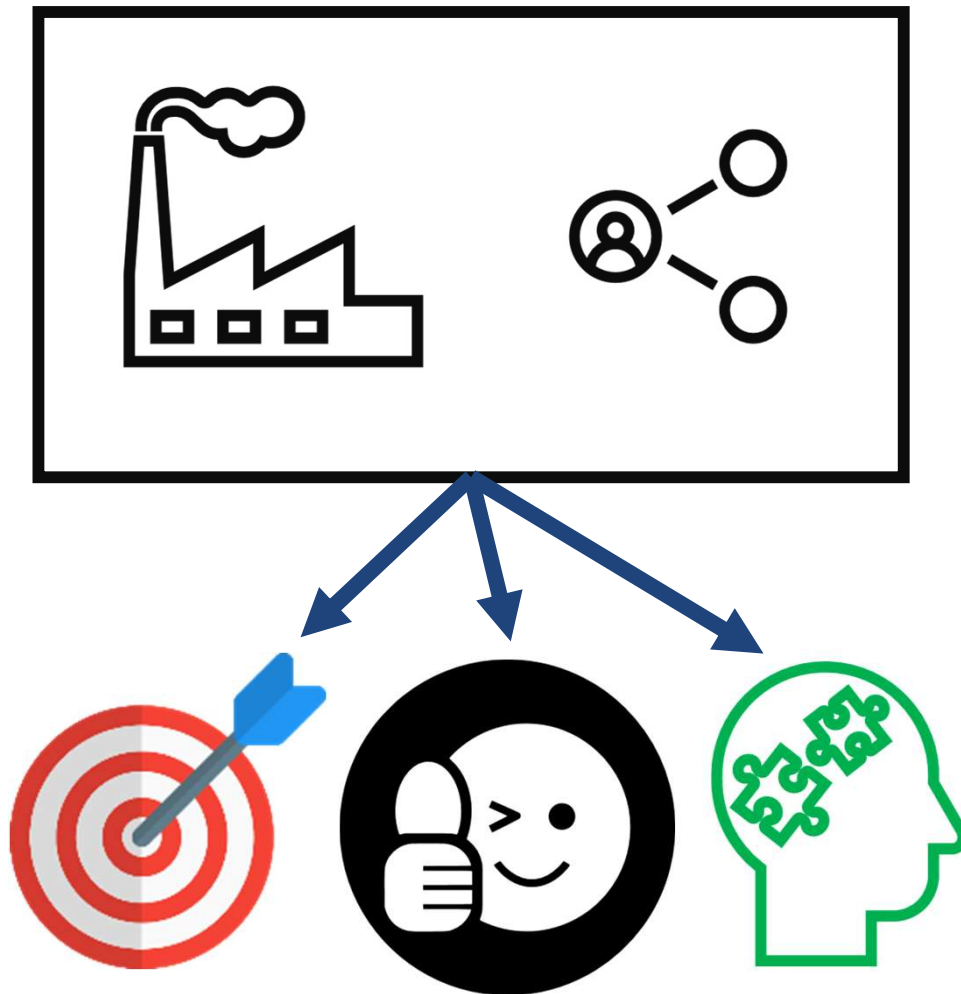


Product Governance

Product Governance - Banks



Product Governance - Insurance



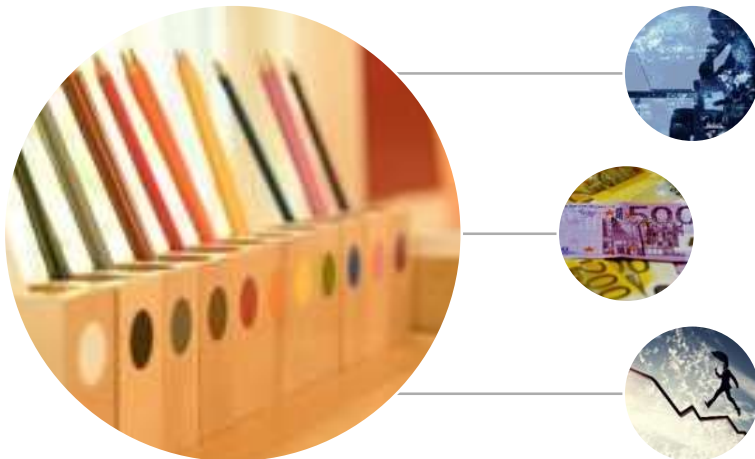
NEW



2nd August
2022

Suitability

Suitability - Banks Today



Suitability - Banks Tomorrow



2 August 2022



Taxonomy



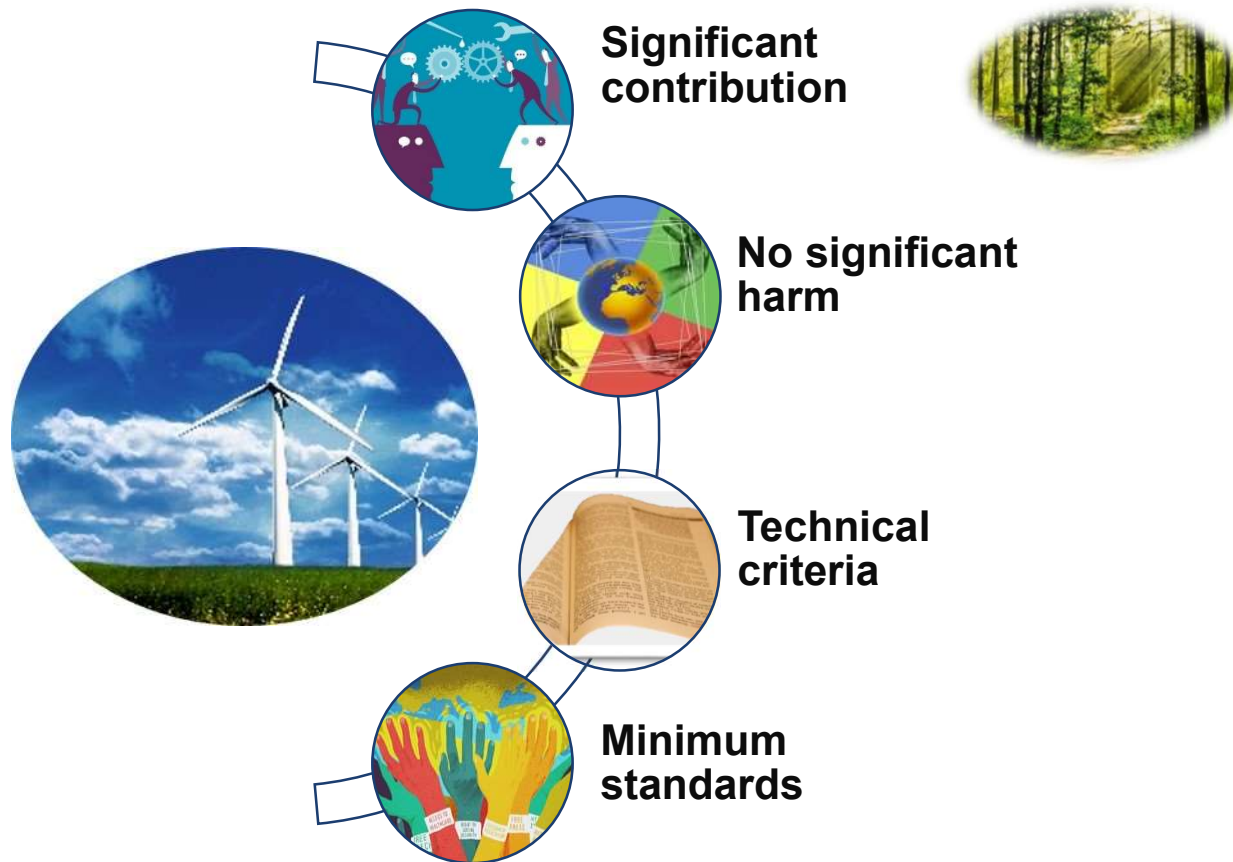
SFDR



**Principal adverse
impacts**

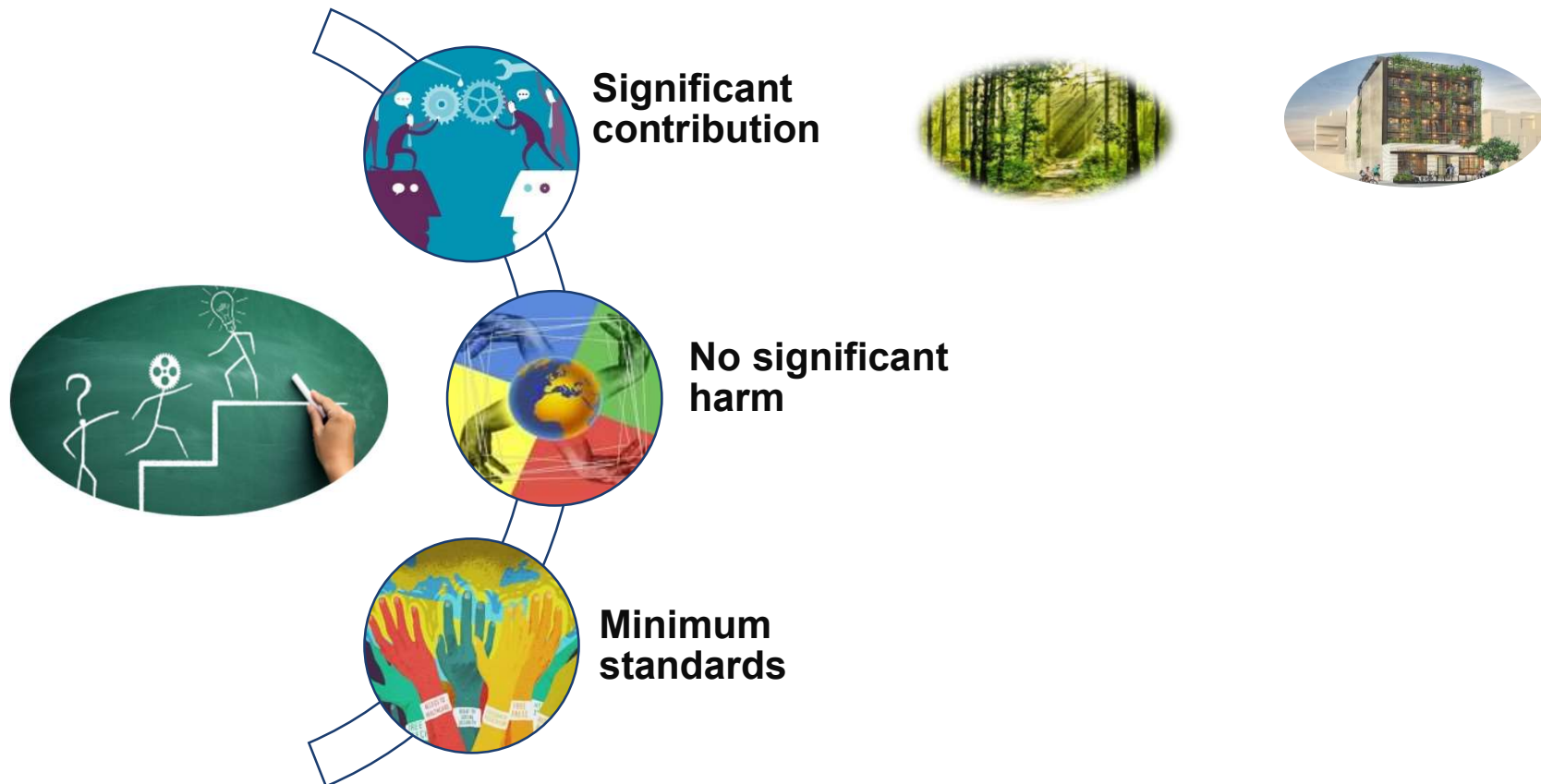
Suitability - Banks

Environmentally sustainable investments - Taxonomy



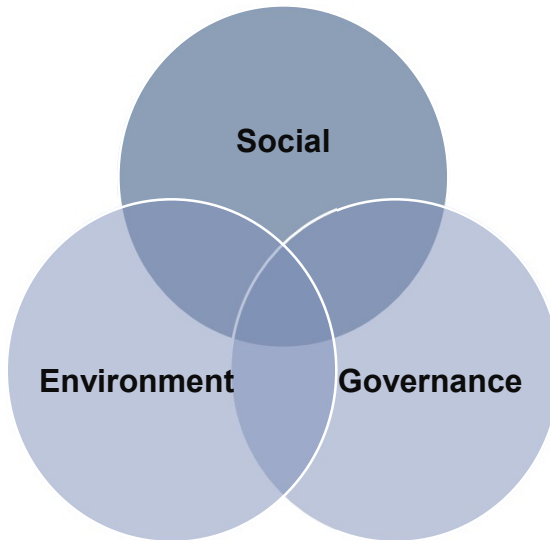
Suitability - Banks

Sustainable investments - SFDR



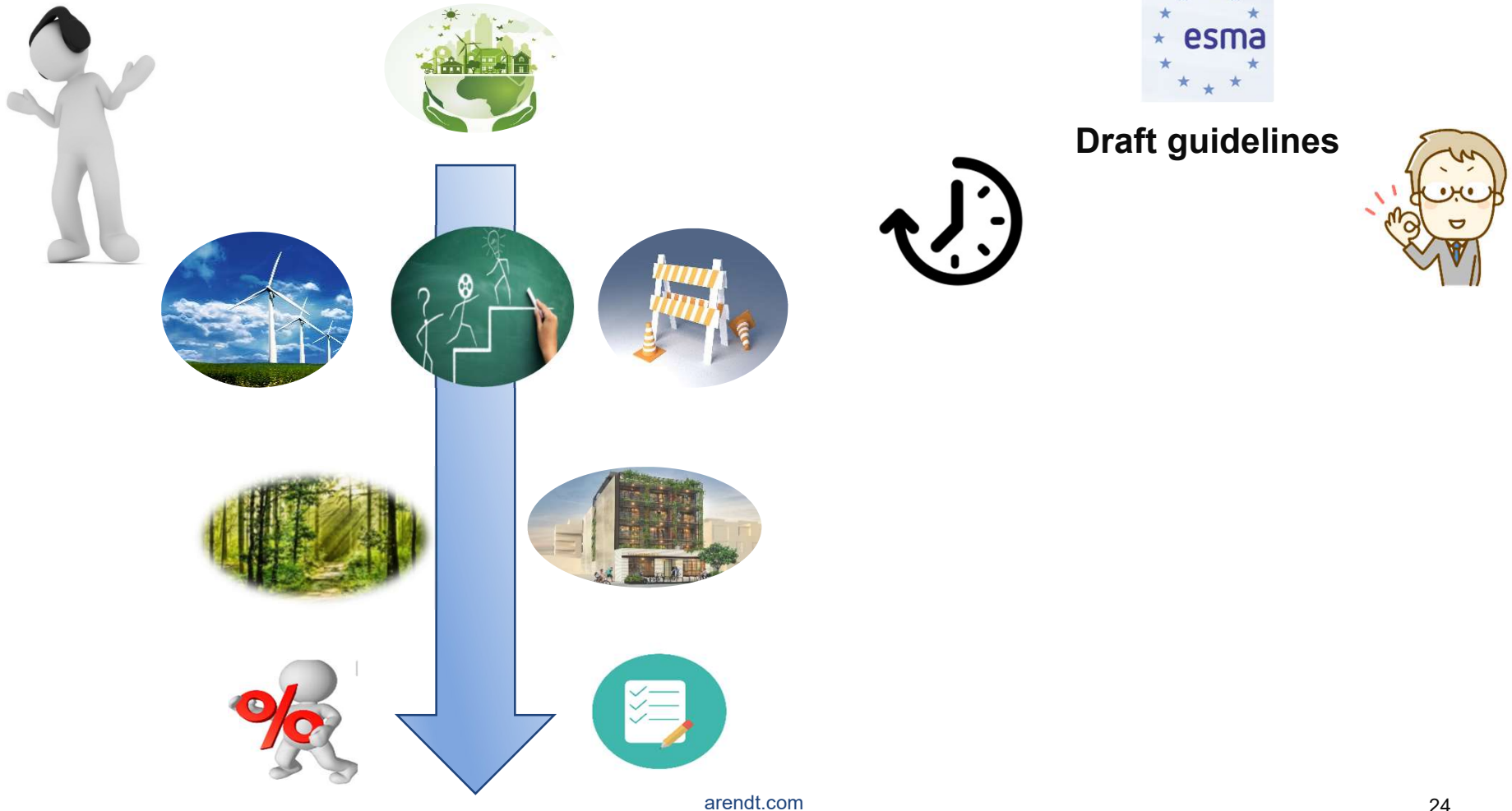
Suitability - Banks

Principal adverse impacts



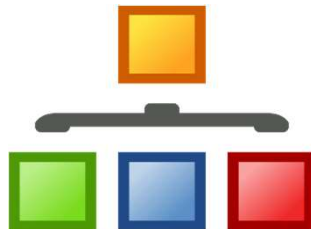
Suitability - Banks

Assessing sustainability preferences

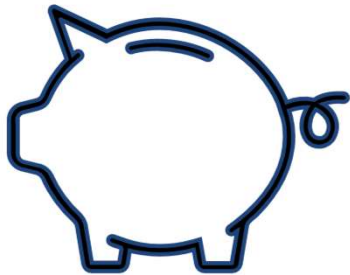


Suitability - Banks

What should you do?



Suitability - Insurance



**2nd August
2022**

Conclusion



Contact us



Emmanuelle Mousel
Partner
Arendt & Medernach

Emmanuelle.mousel@arendt.com



Clara Bourgi
Senior Associate
Arendt & Medernach

Clara.bourgi@arendt.com



Laura Archange
Counsel
Arendt & Medernach

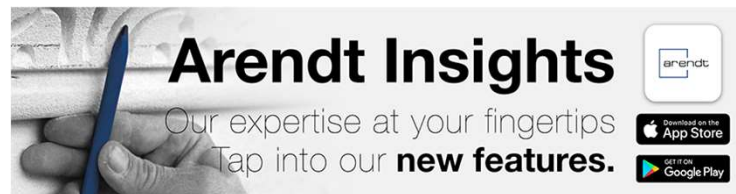
Laura.archange@arendt.com



Antoine Peter
Manager
Arendt Regulatory & Consulting

Antoine.peter@arendt.com

Listen to **Arendt Podcasts** and install the **Arendt Insights App** to never miss a beat with the latest legal, tax and business developments in Luxembourg.



Important Notice and Disclaimer: Whilst a best efforts approach has been taken to ensure the accuracy of the information provided in this presentation, as at the date thereof, this information is only designed to provide with summarised, and therefore non complete, information regarding the topics covered. As such, this presentation does not constitute legal advice, it does not substitute for the consultation with legal counsel required prior to any undertakings and it should not be understood as investment guidelines. If you would like to receive a legal advice on any of the issues raised in this presentation, please contact us.